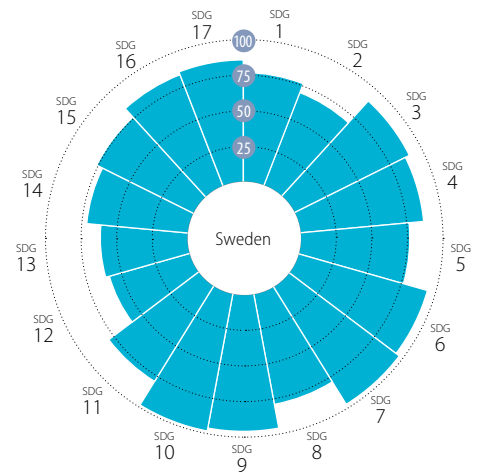


Overall Performance



Performance by SDG



SDG Dashboards and Trends

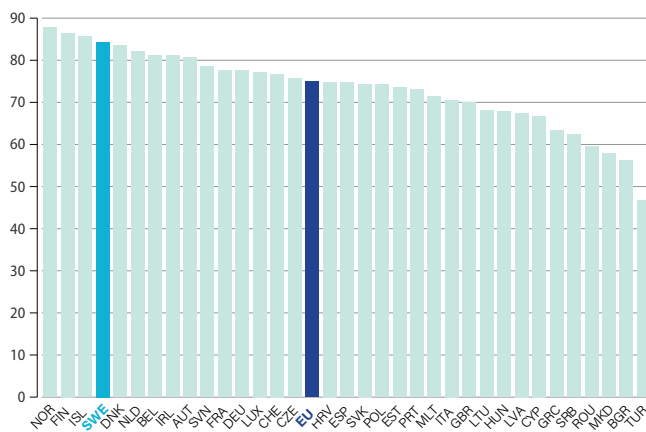


- Major challenges
- Significant challenges
- Challenges remain
- SDG achieved
- Information unavailable
- ↓ Decreasing
- Stagnating
- ↗ Moderately improving
- ↑ On track or maintaining SDG achievement
- Information unavailable

Notes: The full title of Goal 2 "Zero Hunger" is "End hunger, achieve food security and improved nutrition and promote sustainable agriculture".
 The full title of each SDG is available at: <https://sustainabledevelopment.un.org/topics/sustainabledevelopmentgoals>
 Detailed results and methodology available online at <https://www.sdgindex.org/EU>

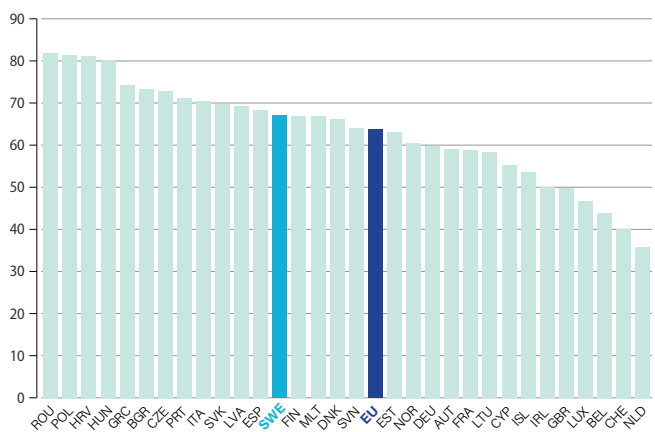
Leave No One Behind Index

100 (best) to 0 (worst)



Spillover Index

100 (best) to 0 (worst)



SDG1 – No Poverty	Value	Year	Rating	Trend	SDG8 – (continued)	Value	Year	Rating	Trend
People at risk of income poverty after social transfers (%)	15.7	2021	●	↑	Fatal work-related accidents embodied in imports (per 100,000 population)	0.3	2018	●	↓
Severely materially deprived people (%)	1.8	2020	●	→	Victims of modern slavery embodied in imports (per 100,000 population)	87.8	2018	●	●
Poverty headcount ratio at \$5.50/day (%)	1.0	2022	●	→	SDG9 – Industry, Innovation and Infrastructure				
SDG2 – Zero Hunger					Gross domestic expenditure on R&D (% of GDP)	3.5	2020	●	↑
Prevalence of obesity, BMI ≥ 30 (% of adult population)	15.3	2019	●	↓	R&D personnel (% of active population)	1.8	2020	●	↑
Human Trophic Level (best 2–3 worst)	2.54	2019	●	→	Patent applications to the European Patent Office (per 1,000,000 population)	477.3	2021	●	↑
Yield gap closure (%)	68.0	2018	●	●	Households with broadband access (%)	93	2021	●	↑
Gross nitrogen balance on agricultural land (kg/hectare)	26.1	2019	●	↑	Gap in internet access, urban vs rural areas (p.p.)	0	2021	●	↑
Ammonia emissions from agriculture (kg/hectare)	15.0	2019	●	↑	Population with at least basic digital skills (%)	67	2021	●	→
Exports of pesticides banned in the EU (kg per 1,000 population)	0.0	2019	●	●	Logistics performance index: Quality of trade and transport-related infrastructure (worst 1–5 best)	4.2	2018	●	↑
SDG3 – Good Health and Well-Being					The Times Higher Education Universities Ranking: Average score of top 3 universities (worst 0–100 best)	64.7	2022	●	↑
Life expectancy at birth (years)	83.2	2021	●	↑	Articles published in academic journals (per 1,000 population)	4.5	2021	●	↑
Gap in life expectancy at birth among regions (years)	1.3	2020	●	↑	SDG10 – Reduced Inequalities				
Population with good or very good perceived health (% of population aged 16 or over)	72.4	2021	●	→	Gini Coefficient	26.8	2021	●	↑
Gap in self-reported health, by income (p.p.)	19.1	2021	●	↑	Palma ratio	0.98	2020	●	↑
Gap in self-reported unmet need for medical examination and care, by income (p.p.)	1.1	2021	●	↑	SDG11 – Sustainable Cities and Communities				
New reported cases of tuberculosis (per 100,000 population)	3.6	2020	●	↑	Urban population without access to green urban areas in their neighbourhood (%)	0.3	2018	●	↑
Standardised preventable and treatable mortality (per 100,000 persons aged less than 75)	170.2	2019	●	↑	Overcrowding rate among people living with below 60% of median equivalized income (%)	42.6	2021	●	↓
Suicide rate (per 100,000 population)	12.8	2019	●	→	Recycling rate of municipal waste (%)	38.3	2020	●	↓
Age-standardised death rate attributable to household air pollution and ambient air pollution (per 100,000 population)	8	2019	●	●	Population living in a dwelling with a leaking roof, damp walls, floors or foundation or rot in window frames or floor (%)	7.1	2020	●	↑
Mortality rate, under-5 (per 1,000 live births)	2.6	2020	●	↑	Housing cost overburden rate (%)	8.5	2021	●	→
People killed in road accidents (per 100,000 population)	2.0	2020	●	↑	Exposure to air pollution: PM2.5 in urban areas (µg/m ³)	5.8	2019	●	↑
Surviving infants who received 2 WHO-recommended vaccines (%)	97	2021	●	→	SDG12 – Responsible Consumption and Production				
Population engaging in heavy, episodic drinking at least once a week (%)	3.8	2019	●	↑	Circular material use rate (%)	7.1	2020	●	→
Smoking prevalence (%)	7	2020	●	↑	Gross value added in environmental goods and services sector (% of GDP)	3.5	2019	●	↑
People covered by health insurance for a core set of services (%)	100.0	2020	●	↑	Production-based SO ₂ emissions (kg/capita)	15.7	2018	●	●
Share of total health spending financed by out-of-pocket payments (%)	13.4	2021	●	↑	Imported SO ₂ emissions (kg/capita)	7.7	2018	●	●
Subjective Wellbeing (average ladder score, worst 0–10 best)	7.4	2021	●	↑	Production-based emissions of reactive nitrogen (kg/capita)	12.7	2015	●	↓
Individuals that use the internet to make appointments with a practitioner (%)	28	2020	●	↑	Imported emissions of reactive nitrogen (kg/capita)	11.8	2015	●	↓
SDG4 – Quality Education					Exports of plastic waste (kg/capita)	9.5	2021	●	→
Participation in early childhood education (% of children between age of 3 and starting age of compulsory primary education)	95.9	2020	●	↑	SDG13 – Climate Action				
Early leavers from education and training (% of population aged 18 to 24)	8.4	2021	●	→	CO ₂ emissions from fossil fuel combustion and cement production (tCO ₂ /capita)	3.8	2020	●	↗
PISA score (worst 0–600 best)	502.5	2018	●	↑	CO ₂ emissions embodied in imports (tCO ₂ /capita)	3.3	2018	●	→
Underachievers in science (% of population aged 15)	19.0	2018	●	↑	CO ₂ emissions embodied in fossil fuel exports (kg/capita)	67.5	2020	●	●
Variation in science performance explained by students' socio-economic status (%)	12.7	2018	●	↓	SDG14 – Life Below Water				
Tertiary educational attainment (% of population aged 25 to 34)	49.3	2021	●	↑	Bathing sites of excellent quality (%)	75.5	2021	●	↑
Adult participation in learning (%)	34.7	2021	●	↑	Fish caught from overexploited or collapsed stocks (% of total catch)	39.2	2018	●	↓
SDG5 – Gender Equality					Fish caught by bottom trawling or dredging (%)	22.8	2018	●	↑
Unadjusted gender pay gap (% of gross male earnings)	11.2	2020	●	↑	Fish caught that are then discarded (%)	6.7	2018	●	↑
Gender employment gap (p.p.)	5.3	2021	●	→	Marine biodiversity threats embodied in imports (per million population)	0.1	2018	●	●
Population inactive due to caring responsibilities (% of population aged 20 to 64)	13.2	2021	●	→	Mean area that is protected in marine sites important to biodiversity (%)	60.2	2021	●	→
Seats held by women in national parliaments (%)	47.6	2021	●	↑	SDG15 – Life on Land				
Positions held by women in senior management positions (%)	37.9	2021	●	↑	Mean area that is protected in terrestrial sites important to biodiversity (%)	59.1	2021	●	→
Proportion of ICT specialists that are women (%)	21.9	2021	●	↗	Mean area that is protected in freshwater sites important to biodiversity (%)	59.4	2021	●	→
SDG6 – Clean Water and Sanitation					Biochemical oxygen demand in rivers (mg O ₂ /litre)	NA	NA	●	●
Population having neither a bath, nor a shower, nor indoor flushing toilet in their household (%)	0.0	2020	●	↑	Nitrate in groundwater (mg NO ₃ /litre)	NA	NA	●	●
Population connected to at least secondary wastewater treatment (%)	96.0	2019	●	↑	Red List Index of species survival (worst 0–1 best)	0.99	2022	●	↑
Freshwater abstraction (% of long-term average available water)	0.7	2017	●	↑	Terrestrial and freshwater biodiversity threats embodied in imports (per million population)	1.6	2018	●	●
Scarce water consumption embodied in imports (m ³ /capita)	2676.0	2018	●	●	SDG16 – Peace, Justice and Strong Institutions				
Population using safely managed water services (%)	99.8	2020	●	↑	Death rate due to homicide (per 100,000 population)	1.0	2019	●	→
Population using safely managed sanitation services (%)	94.9	2020	●	↑	Population reporting crime in their area (%)	13.8	2020	●	↓
SDG7 – Affordable and Clean Energy					Gap in population reporting crime in their area, by income (p.p.)	0.3	2020	●	↑
Population unable to keep home adequately warm (%)	1.7	2021	●	→	Access to justice (worst 0–1 best)	0.77	2020	●	↑
Share of renewable energy in gross final energy consumption (%)	60.1	2020	●	↑	Timeliness of administrative proceedings (worst 0–1 best)	0.83	2020	●	→
CO ₂ emissions from fuel combustion per electricity output (MtCO ₂ /TWh)	0.2	2019	●	→	Constraints on government power (worst 0–1 best)	0.87	2020	●	→
SDG8 – Decent Work and Economic Growth					Corruption Perceptions Index (worst 0–100 best)	85	2021	●	→
Protection of fundamental labour rights (worst 0–1 best)	0.76	2020	●	→	Unsentenced detainees (% of prison population)	28.1	2019	●	→
Gross disposable income (€/capita)	25718	2021	●	↑	Exports of major conventional weapons (TIV constant 1990 million USD per 100,000 population)	2.10	2021	●	●
Youth not in employment, education or training (NEET) (% of population aged 15 to 29)	6.0	2021	●	↑	Press Freedom Index (worst 0–100 best)	88.8	2022	●	→
Unemployment Rate (% labour force)	8.3	2020	●	↓	SDG17 – Partnerships for the Goals				
People killed in accidents at work (per 100,000 workers)	0.7	2019	●	↑	Official development assistance (% of GNI)	0.91	2021	●	→
In work at-risk-of-poverty rate (%)	6.6	2021	●	↑	Shifted profits of multinationals (billion USD)	13.7	2018	●	↑
					Corporate Tax Haven Score (best 0–100 worst)	61	2021	●	●
					Statistical Performance Index (worst 0–100 best)	88.5	2019	●	→